

Safeguarding and Child Protection Policy

This policy was approved by Trustees on:

Board/Committee: Board of Trustees

Date: 25 August 2017

Frequency of review: Every year

Next review date: July 2018

ELT Owner: Director of Education

Author: Regional Safeguarding Lead, North

Note: This document uses the most current Government information and guidance at the time of writing. It may change according to Government policy. Contact E-ACT Head Office with any questions.

Summary of changes at last review:

- Sexting in Schools & Colleges - responding to incidents and safeguarding young people (UKCCIS) 2016
- Update of training requirement to safeguarding *and child protection* training.
- Requirement for sexting and bullying (including cyber bullying) to be encompassed as part of the school curriculum.
- Expansion of actions to be taken by the DSL when there is concern, including: seeking advice from the Safeguarding Hub (MASH) / Children's Advice and Support Service (CASS); notifying Children's Social Care via a request for support form to the Safeguarding Hub / CASS.
- Requirement for the DSL to participate, when invited, in a MASH strategy meeting adding school held data and intelligence to the discussion so that the best interests of the child are met.
- Expansion of support offered to children to include support for children who have abused others (child on child abuse) or who act as Young Carers in their home situation.
- Clarification of actions to be taken when allegations or concerns about staff, colleagues or visitors are raised, including the requirement for any concern relating to the Headteacher to be immediately reported to the Regional Education Director who will decide on any action required, liaising with the Local Authority Designated Officer in children's social care.

Safeguarding Contacts

Role	Name	Contact Details
Designated Safeguarding Lead	Sarah Husband	sarah.husband@E-ACT.org.uk
Deputy Designated Safeguarding Leads	Kim McDonald Maria Burton Jenny Montgomery	kim.mcdonald@E-ACT.org.uk maria.burton@E-ACT.org.uk jennifer.montgomery@E-ACT.org.uk
Single Point of Contact (SPOC)	Sarah Husband	sarah.husband@E-ACT.org.uk
Regional Safeguarding System Leader (taking on responsibilities of former Safeguarding Governor role)	Elizabeth Browne	elizabeth.browne@E-ACT.org.uk 07753 430968
Regional Education Director (acting under delegated authority of the Board of Trustees)	Allan Torr	allan.torr.E-ACT.org.uk

Safeguarding and Child Protection Policy

1. Introduction

1.1 Safeguarding is defined as –

- Protecting children from maltreatment;
- Preventing impairment of children's health or development;
- Ensuring that children are growing up in circumstances consistent with the provision of safe and effective care; and
- Taking action to enable all children to have the best life chances.

1.2 E-ACT and Parkwood Academy are committed to safeguarding and promoting the welfare of all their pupils/students. We believe that:

- All children/young people have the right to be protected from harm;
- Children/young people need to be safe and to feel safe in school;
- Children/young people need support which matches their individual needs, including those who may have experienced abuse;
- All children/young people have the right to speak freely and voice their values and beliefs;
- All children/young people must be encouraged to respect each other's values and support each other;
- All children/young people have the right to be supported to meet their emotional, and social needs as well as their educational needs – a happy, healthy, sociable child/young person will achieve better educationally;
- Schools can and do contribute to the prevention of abuse, victimisation, bullying, exploitation, extreme behaviours, discriminatory views and risk taking behaviours; and
- All staff and visitors have an important role to play in safeguarding children and protecting them from abuse.

1.3 Parkwood Academy will fulfil its local and national responsibilities as laid out in the following documents:-

- The most recent version of **Working Together to Safeguard Children (DfE)**
- The most recent version of **Keeping Children Safe in Education: Statutory guidance for schools and colleges (DfE)**
- **The Procedures of Sheffield Safeguarding Children Board**
- **The Education Act 2002 s175 / s157**
- **Mental Health and Behaviour in Schools: Departmental Advice (DfE 2014)**
- **Sexting in Schools & Colleges – responding to incidents and safeguarding young people (UKCCIS) 2016**

2. Overall aims

- 2.1. This policy will contribute to safeguarding our pupils/students and promoting their welfare by:
- Clarifying standards of behaviour for staff and pupils/students;
 - Contributing to the establishment of a safe, resilient and robust ethos in the school, built on mutual respect, and shared values;
 - Introducing appropriate work within the curriculum;
 - Encouraging pupils/students and parents to participate;
 - Alerting staff to the signs and indicators that all might not be well;
 - Developing staff awareness of the causes of abuse;
 - Developing staff awareness of the risks and vulnerabilities their pupils/students face;
 - Addressing concerns at the earliest possible stage; and
 - Reducing the potential risks pupils/students face of being exposed to violence, extremism, exploitation or victimisation.
- 2.2. This policy will contribute to supporting our pupils by:
- Identifying and protecting the most vulnerable;
 - Identifying individual needs where possible; and
 - Designing plans to meet those needs.
- 2.3. This policy will contribute to the protection of our pupils by:
- Including appropriate work within the curriculum;
 - Implementing child protection policies and procedures; and
 - Working in partnership with pupils/students, parents and agencies.

3. Key principles

- 3.1 These are the key principles of safeguarding:
- Always see the child first.
 - Never do nothing.
 - Do with, not to, others.
 - Do the simple things better.
 - Have conversations, build relationships.
 - Outcomes not outputs.
- 3.2 In addition there are the following key safeguarding messages for schools –
- Every child is entitled to a rich and rounded curriculum.

- Schools operate with public money: this should be spent wisely, targeting resources on the evidenced needs of children at school now. Assurance and audit are important aspects of this.
- When issues arise, head teachers should speak out, addressing them internally where possible and escalating them when this is unsuccessful.
- The Trustee Board have established Regional Safeguarding System Leaders, to work with schools to make sure that the safeguarding of E-ACT's pupils is done to the highest standards possible.

4. Key processes

- 4.1 All staff should be aware of the guidance issued by the Sheffield Safeguarding Children Board.

5. Expectations

- 5.1 All staff and visitors will:

- **Be familiar with this safeguarding policy;**
- **Be subject to Safer Recruitment processes and checks, whether they are new staff, supply staff, contractors, volunteers etc.;**
- **Be involved, where appropriate, in the implementation of individual education programmes, integrated support plans, child in need plans and interagency child protection plans;**
- **Be alert to signs and indicators of possible abuse (See Appendix Two for current definitions and indicators);**
- **Record concerns and give the record to the Designated Safeguarding Lead in a timely manner (*Sarah Husband*)**
- **Deal with a disclosure of abuse from a child in line with the guidance in Appendix Three - you must inform the Designated Safeguarding Lead immediately, and provide a written account as soon as possible.**

- 5.2 All staff will receive safeguarding and child protection training every year. Key staff will undertake more specialist child protection training as agreed by the Trustee Board.

6. The Designated Safeguarding Lead

- 6.1 Our Designated Safeguarding Lead on the senior leadership team is Sarah Husband. S/he has ultimate lead responsibility and management oversight and accountability for child protection and, with the Head teacher, will be responsible for coordinating all child protection activity.
- 6.2 The Designated Safeguarding Lead will lead regular case monitoring reviews of vulnerable children. These reviews must be evidenced by minutes and recorded in case files.
- 6.3 When the school has concerns about a child, the Designated Safeguarding Lead will decide what steps should be taken and should advise the Head teacher.

- 6.4 Child protection information will be dealt with in a confidential manner. Staff will be informed of relevant details only when the Designated Safeguarding Lead feels their having knowledge of a situation will improve their ability to deal with an individual child and/or family. A written record will be made of what information has been shared with whom, and when.
- 6.5 Child protection records will be stored securely in a central place separate from academic records. Individual files will be kept for each child: the school will not keep family files. Files will be kept for at least the period during which the child is attending the school, and beyond that in line with current data legislation and guidance. CPOMS may be used as a system for the reporting of incidents and concerns as a secure management of child protection.
- 6.6 Access to these records by staff other than by the Designated Safeguarding Lead will be restricted, and a written record will be kept of who has had access to them and when. The Designated Safeguarding Lead is responsible for allocating limited numbers of trained staff to have full access rights to CPOMS.
- 6.7 Parents will be aware of information held on their children and kept up to date regarding any concerns or developments by the appropriate members of staff. General communications with parents will be in line with any home school policies and give due regard to which adults have parental responsibility.
- 6.8 The Designated Safeguarding Lead should liaise with the local authority and work with other agencies in the line with „Working Together to Safeguard Children“.
- 6.9 The Designated Safeguarding lead must ensure there are regular supervision meetings in place with other members of the safeguarding team to ensure full overview of the pupil cases.
- 6.9 Do not disclose to a parent any information held on a child if this would put the child at risk of significant harm.**
- 6.10 If a pupil/student moves from our school, child protection records will be forwarded on to the Designated Safeguarding Lead at the new school, with due regard to their confidential nature and in line with current government guidance on the transfer of such records. Direct contact between the two schools may be necessary, especially on transfer from primary to secondary schools. We will record where and to whom the records have been passed and the date.
- 6.11 If sending by post, pupil records will be sent by “Special/Recorded Delivery”. For audit purposes a note of all pupil records transferred or received should be kept in either paper or electronic format. This will include the child’s name, date of birth, where and to whom the records have been sent and the date sent and/or received.
- 6.12 If a pupil/student is permanently excluded and moves to a Pupil Referral Unit, child protection records will be forwarded on to the relevant organisation.
- 6.13 Where a vulnerable young person is moving to a Further Education establishment, consideration should be given to the student’s wishes and feelings on their child protection information being passed on in order that the FE establishment can provide appropriate support.

- 6.14 When a Designated Safeguarding Lead resigns their post or no longer has child protection responsibility, there should be a full face to face handover/exchange of information with the new post holder.
- 6.15 In exceptional circumstances when a face to face handover is infeasible, the Headteacher will ensure that the new post holder is fully conversant with all procedures and case files.

7. The Governing Body

7.1 The Governing Body is the Board of Trustees and it is the accountable body for ensuring the safety of the school

7.2 The governing body will ensure that:

- The school has a combined safeguarding and child protection policy in accordance with the procedures of Sheffield Safeguarding Children Board;
- The school operates, “safer recruitment” procedures and ensures that appropriate checks are carried out on all new staff and relevant volunteers;
- At least one senior member of the school’s leadership team acts as a Designated Safeguarding Lead;
- The Designated Safeguarding Leads attends appropriate refresher training every two years. Their knowledge and skills should be updated annually to keep up with any development to their role;
- The school has appointed a designated teacher to promote the educational achievement of looked after children and ensure that this person is appropriately trained. The designated teacher must work with the virtual head to discuss the funding arrangements to meet the child’s needs through the personal education plan;
- The Designated Safeguarding Lead and other staff recognise that additional barriers can exist when recognising abuse and neglect in children with special educational needs;
- The Headteacher and all other staff who work with children undertake training every year;
- Temporary staff and volunteers are made aware of the school’s arrangements for child protection and their responsibilities;
- The school remedies any deficiencies or weaknesses brought to its attention without delay; and
- The school has procedures for dealing with allegations of abuse against staff/volunteers and peer on peer abuse.

7.3 The governing body reviews its policies/procedures annually.

7.4 The Regional Safeguarding System Leader for child protection at the school is Elizabeth Browne. The Regional Safeguarding System Leader is responsible for liaising with the Head teacher and Designated Safeguarding Lead over all matters regarding child protection issues. The role is strategic rather than operational – they will not be involved in concerns about individual pupils/students.

- 7.5 The Regional Safeguarding System Leader will liaise with the Head teacher and the Designated Safeguarding Lead to produce an annual report for trustees and the local authority (s175/s157).
- 7.6 The Regional Education Director has the delegated authority of the Trustee Board to be responsible for liaising with the local authority and other partner agencies in the event of allegations of abuse being made against the Head teacher.

8. A safer school culture

Safer Recruitment and Selection

- 8.1 The school pays full regard to „Keeping Children Safe in Education“ and the E-ACT SCR & Personal Files Policy. Safer recruitment practice includes scrutinising applicants, verifying identity and academic or vocational qualifications, obtaining professional and character references, checking previous employment history and ensuring that a candidate has the health and physical capacity for the job. It also includes undertaking interviews and undertaking appropriate checks through the Disclosure and Barring Service (DBS).
- 8.2 All recruitment materials will include reference to the school's commitment to safeguarding and promoting the wellbeing of pupils.
- 8.3 **Davinia Reynolds-Browne, Wendy Jackson, Jenny Holmshaw, Victoria Simcock, Elizabeth Browne, Sarah Husband, Zinnia Garratt, Danielle Wragg** have undertaken appropriate training in Safer Recruitment. One of the above will be involved in all staff / volunteer recruitment processes and sit on the recruitment panel.

Staff support

- 8.4 We recognise the stressful and traumatic nature of child protection work. We will support staff by providing an opportunity to talk through their anxieties with the Designated Safeguarding Lead and to seek further support as appropriate.

9. Our role in the prevention of abuse

- 9.1 We will provide opportunities for pupils/students to develop skills, concepts, attitudes and knowledge that promote their safety and well-being.

The curriculum

- 9.2 Relevant issues will be addressed through the PSHE curriculum, for example self-esteem, emotional literacy, assertiveness, power, sex and relationship education, e-safety, sexting and bullying (including cyber bullying)
- 9.3 Relevant issues will be addressed through other areas of the curriculum, for example, circle time, English, History, Drama, Art.

Other areas of work

- 9.4 All our policies which address issues of power and potential harm, for example bullying, equal opportunities, handling, positive behaviour, will be linked to ensure a whole school approach.

- 9.5 Our safeguarding policy cannot be separated from the general ethos of the school, which should ensure that pupils/students are treated with respect and dignity, taught to treat each other with respect, feel safe, have a voice, and are listened to.

10. Safeguarding pupils/students who are vulnerable to radicalisation

- 10.1 Since 2010, when the Government published the Prevent Strategy, there has been an awareness of the specific need to safeguard children, young people and families from violent extremism. There have been several occasions nationally in which extremist groups have attempted to radicalise vulnerable children and young people to hold extreme views including views justifying political, religious, sexist or racist violence, or to steer them into a rigid and narrow ideology that is intolerant of diversity and leaves them vulnerable to future radicalisation.

- 10.2 Parkwood Academy values freedom of speech and the expression of beliefs and ideology as fundamental rights underpinning our society's values. Both pupils and teachers have the right to speak freely and voice their opinions. However, freedom comes with responsibility and free speech that is designed to manipulate the vulnerable or that leads to violence and harm of others goes against the moral principles in which freedom of speech is valued. Free speech is not an unqualified privilege; it is subject to laws and policies governing equality, human rights, community safety and community cohesion.

- 10.3 The current threat from terrorism in the United Kingdom may include the exploitation of vulnerable people, to involve them in terrorism or in activity in support of terrorism. The normalisation of extreme views may also make children and young people vulnerable to future manipulation and exploitation. Parkwood Academy is clear that this exploitation and radicalisation should be viewed as a safeguarding concern and that protecting children from the risk of radicalisation is part of the school's safeguarding duty.

10.4 **Definitions of radicalisation and extremism, and indicators of vulnerability to radicalisation are in Appendix Five.**

- 10.5 Parkwood Academy seeks to protect children and young people against the messages of all violent extremism including, but not restricted to, those linked to Islamist ideology, or to Far Right/Neo Nazi/White Supremacist ideology, Irish Nationalist and Loyalist paramilitary groups, and extremist Animal Rights movements.

Risk reduction

- 10.6 The Regional Educational Team, the Head teacher and the Designated Safeguarding Lead will assess the level of risk within the school and put actions in place to reduce that risk. Risk assessment may include consideration of the school's RE curriculum, SEND policy, assembly policy, the use of school premises by external agencies, integration of pupils by gender and SEN, anti-bullying policy and other issues specific to the school's profile, community and philosophy.

- 10.7 This risk assessment will be reviewed as part of the annual s175 return that is monitored by the local authority and the local safeguarding children board.

Response

- 10.8 With effect from 1st July 2015 all schools are subject to a duty to have “due regard to the need to prevent people being drawn into terrorism” (section 26, Counter Terrorism and Security Act 2015). This is known as The Prevent Duty. (Revised Prevent Duty Guidance)
- 10.9 There is no single way to identify an individual who is likely to be susceptible to an extremist ideology. Specific background factors may contribute to vulnerability and these are often combined with specific needs for which an extremist group may appear to provide answers, and specific influences such as family, friends and online contacts. The use of social media has become a significant feature in the radicalisation of young people. More information on these factors is in Appendix Five.
- 10.10 Our school, like all others, is required to identify a Prevent Single Point of Contact (SPOC) who will be the lead within the organisation for safeguarding in relation to protecting individuals from radicalisation and involvement in terrorism: this will normally be the Designated Safeguarding Lead. The SPOC for Parkwood Academy is Sarah Husband. The responsibilities of the SPOC are described in Appendix Six.
- 10.11 Staff of Parkwood Academy will be alert to changes in a child’s behaviour or attitude which could indicate that they are in need of help or protection.
- 10.12 When any member of staff has concerns that a pupil may be at risk of radicalisation or involvement in terrorism, they should speak with the SPOC, and to the Designated Safeguarding Lead if this is not the same person.
- 10.13 Numerous factors can contribute to and influence the range of behaviours that are defined as violent extremism, but most young people do not become involved in extremist action. For this reason the appropriate interventions in any particular case may not have any specific connection to the threat of radicalisation, for example they may address mental health, relationship or drug/alcohol issues.

Channel

- 10.14 Channel is a multi-agency approach to provide support to individuals who are at risk of being drawn into terrorist related activity. It aims to:
- Establish an effective multi-agency referral and intervention process to identify vulnerable individuals;
 - Safeguard individuals who might be vulnerable to being radicalised, so that they are not at risk of being drawn into terrorist-related activity; and
 - Provide early intervention to protect and divert people away from the risks they face and reduce vulnerability.
- 10.15 The Channel programme focuses on providing support at an early stage to people who are identified as being vulnerable to being drawn into terrorism. It provides a mechanism for schools to make referrals if they are concerned that an individual might be vulnerable to radicalisation. An individual’s participation in the programme is entirely voluntary at all stages.
- 10.16 Schools have a duty to cooperate with the Channel programme in the carrying out of its functions, and with the Police in providing information about an individual who is referred to Channel (Section 38, Counter Terrorism and Security Act 2015).

10.17 Further guidance about duties relating to the risk of radicalisation is available in the Advice for Schools on [The Prevent Duty](#).

11. Safeguarding pupils who are vulnerable to exploitation, forced marriage, female genital mutilation, or trafficking.

- 11.1 Our safeguarding policy above, and the school's values, ethos and behaviour policies, provide the basic platform to ensure children and young people are given the support to respect themselves and others, stand up for themselves and protect each other.
- 11.2 Our school keeps itself up to date on the latest advice and guidance provided to assist in addressing specific vulnerabilities and forms of exploitation.
- 11.3 Our staff are supported to recognise warning signs and symptoms in relation to specific issues, and include such issues in an age appropriate way in their curriculum.
- 11.4 Our school works with and engages our families and communities to talk about such issues.
- 11.5 Our staff are supported to talk to families about sensitive concerns in relation to their children and to find ways to address them together wherever possible.
- 11.6 Our Designated Safeguarding Lead knows where to seek and get advice as necessary.
- 11.7 Our school brings in experts and uses specialist material to support the work we do.

Reporting of female genital mutilation

- 11.8 With effect from October 2015 all schools are subject to a mandatory reporting requirement in respect of female genital mutilation. When a teacher discovers that an act of FGM appears to have been carried out on a girl aged under 18, that teacher has a statutory duty to report it to the police. Failure to report such cases will result in disciplinary sanctions.
- 11.9 When a teacher at Parkwood Academy has reasons to suspect that an act of FGM has been carried out on a pupil, s/he will discuss the situation with the Designated Safeguarding Lead, who may consult children's social care before a decision is made as to whether the mandatory reporting duty applies.

12. Children who go missing from education

- 12.1 A child going missing from education is a potential indicator of abuse or neglect, including sexual exploitation, FGM, forced marriage or travelling to conflict zones. School staff will be alert to these safeguarding concerns when a pupil / student goes missing for an extended period, or on repeat occasions.
- 12.2 The school must notify the local authority of any pupil/student who fails to attend school regularly, or has been absent without the school's permission for a continuous

period of 5 school days or more. The school must also notify the local authority of any pupil/student who is to be deleted from the admission register because s/he –

- Has been taken out of school by their parents and is being educated outside the school system (e.g. home education);
- Has ceased to attend school and no longer lives within a reasonable distance of the school at which s/he is registered;
- Has been certified by the school medical officer as unlikely to be in a fit state of health to attend school before ceasing to be of compulsory school age, and neither s/he nor his/her parent has indicated the intention to continue to attend the school after ceasing to be of compulsory school age;
- Is in custody for a period of more than four months due to a final court order and the proprietor does not reasonably believe that s/he will return to the school at the end of that period; or
- Has been permanently excluded.

13. What we do when we are concerned

13.1 Where risk factors are present but there is no evidence of a particular risk then our DSL/SPOC advises us on preventative work that can be done within school to engage the pupil into mainstream activities and social groups. The DSL may well be the person who talks to and has conversations with the pupil/student's family, sharing the school's concern about the young person's vulnerability and how the family and school can work together to reduce the risk.

13.2 In this situation, depending on how worried we are and what we agree with the parent and the young person (as far as possible) –

The DSL may decide to:

- Monitor the situation after taking appropriate action to address the concerns.
- Undertake an Early Help assessment to try to meet the needs of the child and family through a multi-agency approach.
- Seek advice from the Safeguarding Hub (MASH) / Children's Advice and Support Service (CASS) so that a strategic overview can be maintained and any themes or common factors can be recognised.
- Notify Children's Social Care via a request for support form to the Safeguarding Hub / CASS.

13.3 If it is felt there are a number of concerning factors for the young person, the DSL will also offer and seek advice about undertaking an Early Help Assessment and consider, if this does not have an impact on the situation making a referral to children's social care.

13.4 If the concerns about the pupil/student are significant and meet the additional needs/complex need criteria, they will be referred to the MASH / CASS. This includes concerns about a child/young person who is affected by the behaviour of a parent or other adult in their household.

14. Involving parents/carers

- 14.1 In general, we will discuss any child protection concerns with parents/carers before approaching other agencies, and will seek their consent to making a referral to another agency. Appropriate staff will approach parents/carers after consultation with the Designated Safeguarding Lead. However there may be occasions when the school will contact another agency before informing parents/carers because it considers that contacting them may increase the risk of significant harm to the child.
- 14.2 Parents/carers will be informed about our safeguarding policy through the school website.

15. Multi-agency work

- 15.1 We work in partnership with other agencies in the best interests of the children. The school will, where necessary, liaise with the school nurse and doctor, and make referrals to children's social care. Referrals should be made by the Designated Safeguarding Lead to the Multi-Agency Safeguarding Hub – 0114 2331189. Where the child already has a safeguarding social worker, the request for service should go immediately to the social worker involved, or in their absence to their team manager.
- 15.2 When invited the DSL will participate in a MASH strategy meeting, usually by conference phone, adding school held data and intelligence to the discussion so that the best interests of the child are met.
- 15.3 We will co-operate with any child protection enquiries conducted by children's social care: the school will ensure representation at appropriate inter-agency meetings such as integrated support plan meetings initial and review child protection conferences, and core group meetings.
- 15.4 We will provide reports as required for these meetings. If the school is unable to attend, a written report will be sent. The report will, wherever possible, be shared with parents / carers at least 24 hours prior to the meeting.
- 15.5 Where a pupil/student is subject to an inter-agency child protection plan or a multi-agency risk assessment conference (MARAC) meeting, the school will contribute to the preparation, implementation and review of the plan as appropriate.

16. Our role in supporting children

- 16.1 We will offer appropriate support to individual children who have experienced abuse, who have abused others (child on child abuse) or who act as Young Carers in their home situation.
- 16.2 An individual support plan will be devised, implemented and reviewed regularly for these children. This plan will detail areas of support, who will be involved, and the child's wishes and feelings. A written outline of the individual support plan will be kept in the child's child protection record.
- 16.3 Children and young people who abuse others will be responded to in a way that meets their needs as well as protecting others within the school community through a multi-agency risk assessment. We will ensure that the needs of children and young people who abuse others will be considered separately from the needs of their victims.

16.4 We will ensure the school works in partnership with parents / carers and other agencies as appropriate.

17. Responding to an allegation about a member of staff

17.1 This procedure should be used in any case in which it is alleged that a member of staff, visiting professional or volunteer has:

- Behaved in a way that has harmed a child or may have harmed a child;
- Possibly committed a criminal offence against or related to a child; or
- Behaved in a way that indicates s/he is unsuitable to work with children.

17.2 Although it is an uncomfortable thought, it needs to be acknowledged that there is the potential for staff in school to abuse children. Staff members working with children are advised to maintain an attitude '**it could happen here**' where safeguarding is concerned.

17.3 All staff working within our organisation must report any potential safeguarding concerns about an individual's behaviour towards children and young people immediately.

17.3.1 Allegations or concerns about staff, colleagues and visitors must be reported direct to the Head teacher who will liaise with Local Authority Designated Officer in children's social care who will decide on any action required. It may be decided that the LADO is not required to be involved however the Academy may feel it is necessary to proceed with further action if deemed as a staff conduct issue.

17.3.2 If the concern relates to the Head teacher, it must be reported immediately to the Regional Education Director and they will decide on any action required, liaising with the Local Authority Designated Officer in children's social care .

18. Children with additional needs

18.1 Parkwood Academy recognises that while all children have a right to be safe, some children may be more vulnerable to abuse, for example those with a disability or special educational need, those living with domestic violence or drug / alcohol abusing parents, etc.

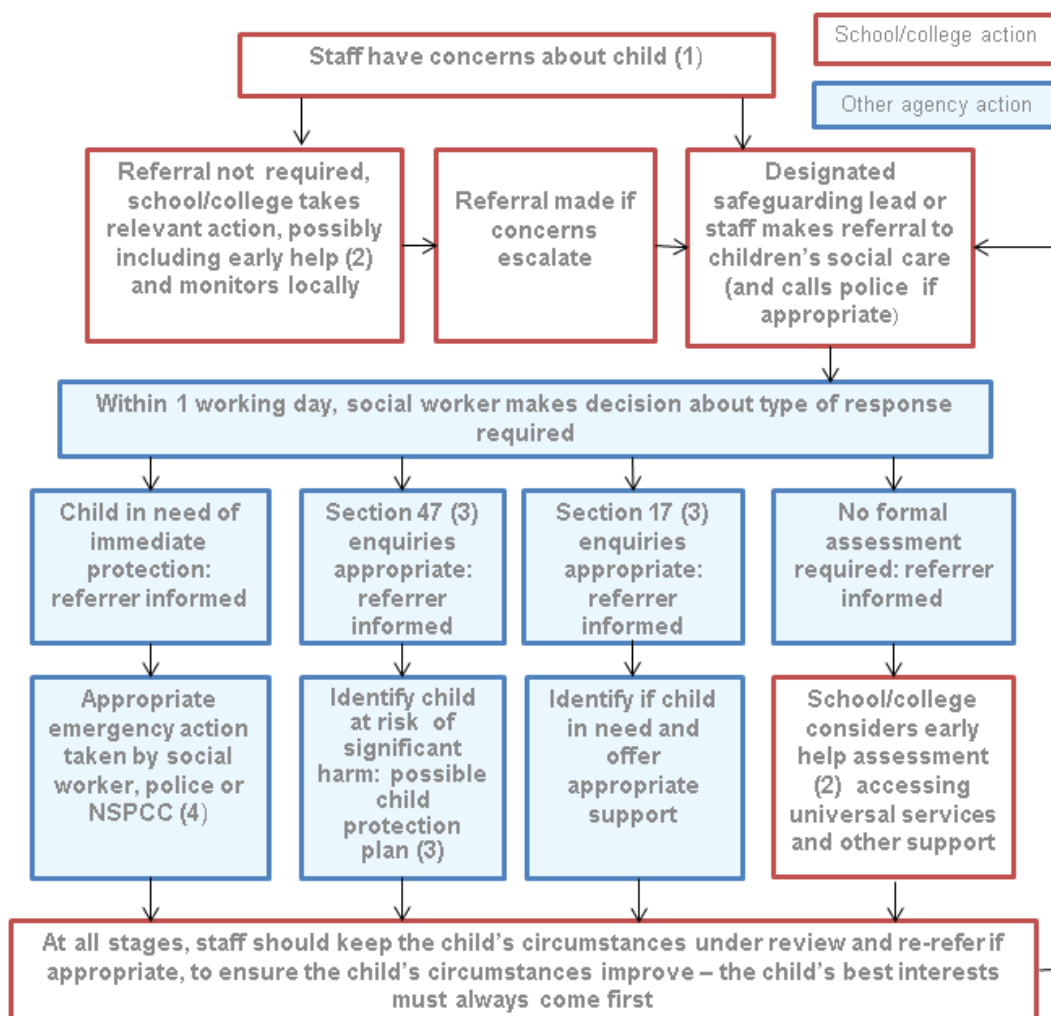
18.2 When the school is considering excluding, either fixed term or permanently, a vulnerable pupil and / or a pupil/student who is the subject of a child protection plan or where there is an existing child protection file, we will call a multi-agency risk-assessment meeting prior to making the decision to exclude. In the event of a one-off serious incident resulting in an immediate decision to exclude, the risk assessment **must** be completed prior to convening an Exclusion Hearing.

APPENDICES

APPENDIX ONE

Action when a child has suffered or is likely to suffer harm (flow chart from “Keeping children safe in education”)

Actions where there are concerns about a child



1. In cases which also involve an allegation of abuse against a staff member, see Part four of this guidance.
2. Early help means providing support as soon as a problem emerges at any point in a child's life. Where a child would benefit from co-ordinated early help, an early help inter-agency assessment should be arranged. Chapter one of Working together to safeguard children provides detailed guidance on the early help process.
3. Under the Children Act 1989, local authorities are required to provide services for children in need for the purposes of safeguarding and promoting their welfare. This can include s17 assessments of children in need and s47 assessments of children at risk of significant harm. Full details are in Chapter one of Working together to safeguard children.
4. This could include applying for an Emergency Protection Order (EPO).

APPENDIX TWO

DEFINITIONS AND INDICATORS OF ABUSE

1. NEGLECT

Neglect is the persistent failure to meet a child's basic physical and/or psychological needs, likely to result in the serious impairment of the child's health or development. Neglect may occur during pregnancy as a result maternal substance abuse. Once a child is born, neglect may involve a parent or carer failing to:

1. Provide adequate food, clothing and shelter (including exclusion from home or abandonment);
2. Protect a child from physical and emotional harm or danger;
3. Ensure adequate supervision (including the use of inadequate care-givers); or
4. Ensure access to appropriate medical care or treatment.

It may also include neglect of, or unresponsiveness to, a child's basic emotional needs.

The following may be indicators of neglect (this is not designed to be used as a checklist):

- Constant hunger;
- Stealing, scavenging and/or hoarding food;
- Frequent tiredness or listlessness;
- Frequently dirty or unkempt;
- Often poorly or inappropriately clad for the weather;
- Poor school attendance or often late for school;
- Poor concentration;
- Affection or attention seeking behaviour;
- Illnesses or injuries that are left untreated;
- Failure to achieve developmental milestones, for example growth, weight;
- Failure to develop intellectually or socially;
- Responsibility for activity that is not age appropriate such as cooking, ironing, caring for siblings;
- The child is regularly not collected or received from school; or
- The child is left at home alone or with inappropriate carers

2. PHYSICAL ABUSE

Physical abuse may involve hitting, shaking, throwing, poisoning, burning or scalding, drowning, suffocating or otherwise causing physical harm to a child. Physical harm may also be caused when a parent or carer fabricates the symptoms of, or deliberately induces, illness in a child.

The following may be indicators of physical abuse (this is not designed to be used as a checklist):

- Multiple bruises in clusters, or of uniform shape;
- Bruises that carry an imprint, such as a hand or a belt;
- Bite marks;
- Round burn marks;
- Multiple burn marks and burns on unusual areas of the body such as the back, shoulders or buttocks;
- An injury that is not consistent with the account given;

- Changing or different accounts of how an injury occurred;
- Bald patches;
- Symptoms of drug or alcohol intoxication or poisoning;
- Unaccountable covering of limbs, even in hot weather;
- Fear of going home or parents being contacted;
- Fear of medical help;
- Fear of changing for PE;
- Inexplicable fear of adults or over-compliance;
- Violence or aggression towards others including bullying; or
- Isolation from peers.

3. SEXUAL ABUSE

Sexual abuse involves forcing or enticing a child or young person to take part in sexual activities, not necessarily involving a high level of violence, whether or not the child is aware of what is happening. The activities may involve physical contact, including assault by penetration (for example, rape or oral sex) or non-penetrative acts such as masturbation, kissing, rubbing and touching outside of clothing. They may also include non-contact activities, such as involving children in looking at, or in the production of, sexual images, watching sexual activities, encouraging children to behave in sexually inappropriate ways, or grooming a child in preparation for abuse (including via the internet). Sexual abuse is not solely perpetrated by adult males. Women can also commit acts of sexual abuse, as can other children.

The following may be indicators of sexual abuse (this is not designed to be used as a checklist):

- Sexually explicit play or behaviour or age-inappropriate knowledge;
- Anal or vaginal discharge, soreness or scratching;
- Reluctance to go home;
- Inability to concentrate, tiredness;
- Refusal to communicate;
- Thrush, persistent complaints of stomach disorders or pains;
- Eating disorders, for example anorexia nervosa and bulimia;
- Attention seeking behaviour, self-mutilation, substance abuse;
- Aggressive behaviour including sexual harassment or molestation;
- Unusual compliance;
- Regressive behaviour, enuresis, soiling;
- Frequent or open masturbation, touching others inappropriately;
- Depression, withdrawal, isolation from peer group;
- Reluctance to undress for PE or swimming; or
- Bruises or scratches in the genital area.

4. SEXUAL EXPLOITATION

Child sexual exploitation occurs when a child or young person, or another person, receives “something” (for example food, accommodation, drugs, alcohol, cigarettes, affection, gifts, money) as a result of the child/young person performing sexual activities, or another person performing sexual activities on the child/young person.

The presence of any significant indicator for sexual exploitation should trigger a referral to children’s social care. The significant indicators are:

- Having a relationship of concern with a controlling adult or young person (this may involve physical and/or emotional abuse and/or gang activity);
- Entering and/or leaving vehicles driven by unknown adults;
- Possessing unexplained amounts of money, expensive clothes or other items;
- Frequenting areas known for risky activities;
- Being groomed or abused via the Internet and mobile technology; and
- Having unexplained contact with hotels, taxi companies or fast food outlets.

5. EMOTIONAL ABUSE

Emotional abuse is the persistent emotional maltreatment of a child such as to cause severe and persistent adverse effects on the child's emotional development. It may involve conveying to children that they are worthless or unloved, inadequate, or valued only insofar as they meet the needs of another person. It may include not giving the child opportunities to express their views, deliberately silencing them or 'making fun' of what they say or how they communicate. It may feature age or developmentally inappropriate expectations being imposed on children. These may include interactions that are beyond the child's developmental capability, as well as overprotection and limitation of exploration and learning, or preventing the child participating in normal social interaction. It may also involve seeing or hearing the ill-treatment of another person. It may involve serious bullying (including cyber bullying), causing children frequently to feel frightened or in danger, or the exploitation or corruption of children. Some level of emotional abuse is involved in all types of maltreatment

The following may be indicators of emotional abuse (this is not designed to be used as a checklist):

- The child consistently describes him/herself in very negative ways – as stupid, naughty, hopeless, ugly;
- Over-reaction to mistakes;
- Delayed physical, mental or emotional development;
- Sudden speech or sensory disorders;
- Inappropriate emotional responses, fantasies;
- Neurotic behaviour: rocking, banging head, regression, tics and twitches;
- Self harming, drug or solvent abuse;
- Fear of parents being contacted;
- Running away;
- Compulsive stealing;
- Appetite disorders - anorexia nervosa, bulimia; or
- Soiling, smearing faeces, enuresis.

N.B.: Some situations where children stop communication suddenly (known as “traumatic mutism”) can indicate maltreatment.

6. RESPONSES FROM PARENTS

Research and experience indicate that the following responses from parents may suggest a cause for concern across all four categories:

- Delay in seeking treatment that is obviously needed;
- Unawareness or denial of any injury, pain or loss of function (for example, a fractured limb);

- Incompatible explanations offered, several different explanations or the child is said to have acted in a way that is inappropriate to her/his age and development;
- Reluctance to give information or failure to mention other known relevant injuries;
- Frequent presentation of minor injuries;
- A persistently negative attitude towards the child;
- Unrealistic expectations or constant complaints about the child;
- Alcohol misuse or other drug/substance misuse;
- Parents request removal of the child from home; or
- Violence between adults in the household.

7. DISABLED CHILDREN

When working with children with disabilities, practitioners need to be aware that additional possible indicators of abuse and/or neglect may also include:

- A bruise in a site that might not be of concern on an ambulant child such as the shin, might be of concern on a non-mobile child;
- Not getting enough help with feeding leading to malnourishment;
- Poor toileting arrangements;
- Lack of stimulation;
- Unjustified and/or excessive use of restraint;
- Rough handling, extreme behaviour modification such as deprivation of medication, food or clothing, disabling wheelchair batteries;
- Unwillingness to try to learn a child's means of communication;
- Ill-fitting equipment. for example callipers, sleep boards, inappropriate splinting;
- Misappropriation of a child's finances; or
- Inappropriate invasive procedures.

APPENDIX THREE

DEALING WITH A DISCLOSURE OF ABUSE

When a child tells me about abuse s/he has suffered, what must I remember?

- Stay calm.
- Do not communicate shock, anger or embarrassment.
- Reassure the child. Tell her/him you are pleased that s/he is speaking to you.
- Never enter into a pact of secrecy with the child. Assure her/him that you will try to help but let the child know that you will have to tell other people in order to do this. State who this will be and why.
- Tell her/him that you believe them. Children very rarely lie about abuse; but s/he may have tried to tell others and not been heard or believed.
- Tell the child that it is not her/his fault.
- Encourage the child to talk but do not ask "leading questions" or press for information.
- Listen and remember.
- Check that you have understood correctly what the child is trying to tell you.
- Praise the child for telling you. Communicate that s/he has a right to be safe and protected.
- Do not tell the child that what s/he experienced is dirty, naughty or bad.
- It is inappropriate to make any comments about the alleged offender.
- Be aware that the child may retract what s/he has told you. It is essential to record all you have heard.
- At the end of the conversation, tell the child again who you are going to tell and why that person or those people need to know.
- As soon as you can afterwards, make a detailed record of the conversation using the child's own language. Include any questions you may have asked. Do not add any opinions or interpretations.

NB It is not education staff's role to seek disclosures. Their role is to observe that something may be wrong, ask about it, listen, be available and try to make time to talk.

Immediately afterwards

You must not deal with this yourself. Clear indications or disclosure of abuse must be reported to children's social care without delay, by the Head teacher or the Designated Safeguarding Lead.

Children making a disclosure may do so with difficulty, having chosen carefully to whom they will speak. Listening to and supporting a child/young person who has been abused can be traumatic for the adults involved. Support for you will be available from your Designated Safeguarding Lead or Head teacher.

APPENDIX FOUR

ALLEGATIONS ABOUT A MEMBER OF STAFF, TRUSTEE OR VOLUNTEER

1. **Inappropriate behaviour by staff/volunteers could take the following forms:**
 - **Physical**
For example the intentional use of force as a punishment, slapping, use of objects to hit with, throwing objects or rough physical handling.
 - **Emotional**
For example intimidation, belittling, scapegoating, sarcasm, lack of respect for children's rights, and attitudes that discriminate on the grounds of race, gender, disability or sexuality.
 - **Sexual**
For example sexualised behaviour towards pupils, sexual harassment, sexual assault and rape.
 - **Neglect**
For example failing to act to protect a child or children, failing to seek medical attention or failure to carry out an appropriate risk assessment.

2. If a child makes an allegation about a member of staff, trustee, visitor or volunteer the Head teacher should be informed immediately. The Head teacher should carry out an urgent initial consideration in order to establish whether there is substance to the allegation. The Head teacher should not carry out the investigation him/herself or interview pupils.

3. The Head teacher must exercise, and be accountable for, their professional judgement on the action to be taken, as follows –
 - If the actions of the member of staff, and the consequences of the actions, raise credible child protection concerns the Head teacher will notify the Local Authority Designated Officer (LADO) Team (Tel: 0114 2734850). The LADO Team will liaise with the Regional Director of Education and advise about action to be taken, and may initiate internal referrals within children's social care to address the needs of children likely to have been affected.
 - If the actions of the member of staff, and the consequences of the actions, do not raise credible child protection concerns, but do raise other issues in relation to the conduct of the member of staff or the pupil(s), these should be addressed through the school's own internal procedures.
 - If the Head teacher decides that the allegation is without foundation and no further formal action is necessary, all those involved should be informed of this conclusion, and the reasons for the decision should be recorded on the child protection file.

- Where an allegation has been made against the Head teacher, then the Regional Director of Education takes on the role of liaising with the LADO Team in determining the appropriate way forward.

APPENDIX FIVE

INDICATORS OF VULNERABILITY TO RADICALISATION

1. Radicalisation refers to the process by which a person comes to support terrorism and forms of extremism leading to terrorism.
2. Extremism is defined by the Government in the Prevent Strategy as:

Vocal or active opposition to fundamental British values, including democracy, the rule of law, individual liberty and mutual respect and tolerance of different faiths and beliefs. We also include in our definition of extremism calls for the death of members of our armed forces, whether in this country or overseas.

1. Extremism is defined by the Crown Prosecution Service as:

The demonstration of unacceptable behaviour by using any means or medium to express views which:

- Encourage, justify or glorify terrorist violence in furtherance of particular beliefs;
 - Seek to provoke others to terrorist acts;
 - Encourage other serious criminal activity or seek to provoke others to serious criminal acts; or
 - Foster hatred which might lead to inter-community violence in the UK.
4. There is no such thing as a “typical extremist”: those who become involved in extremist actions come from a range of backgrounds and experiences, and most individuals, even those who hold radical views, do not become involved in violent extremist activity.
 5. Pupils may become susceptible to radicalisation through a range of social, personal and environmental factors - it is known that violent extremists exploit vulnerabilities in individuals to drive a wedge between them and their families and communities. It is vital that school staff are able to recognise those vulnerabilities.
 6. Indicators of vulnerability include:
 - Identity Crisis – the student / pupil is distanced from their cultural / religious heritage and experiences discomfort about their place in society;
 - Personal Crisis – the student / pupil may be experiencing family tensions; a sense of isolation; and low self-esteem; they may have dissociated from their existing friendship group and become involved with a new and different group of friends; they may be searching for answers to questions about identity, faith and belonging;
 - Personal Circumstances – migration; local community tensions; and events affecting the student / pupil's country or region of origin may contribute to a sense of grievance that is triggered by personal experience of racism or discrimination or aspects of Government policy;
 - Unmet Aspirations – the student / pupil may have perceptions of injustice; a feeling of failure; rejection of civic life;

- Experiences of Criminality – which may include involvement with criminal groups, imprisonment, and poor resettlement / reintegration;
 - Special Educational Need – students / pupils may experience difficulties with social interaction, empathy with others, understanding the consequences of their actions and awareness of the motivations of others.
7. However, this list is not exhaustive, nor does it mean that all young people experiencing the above are at risk of radicalisation for the purposes of violent extremism.
8. More critical risk factors could include:
- Being in contact with extremist recruiters;
 - Accessing violent extremist websites, especially those with a social networking element;
 - Possessing or accessing violent extremist literature;
 - Using extremist narratives and a global ideology to explain personal disadvantage;
 - Justifying the use of violence to solve societal issues;
 - Joining or seeking to join extremist organisations;
 - Significant changes to appearance and / or behaviour; and
 - Experiencing a high level of social isolation resulting in issues of identity crisis and / or personal crisis.

APPENDIX SIX

PREVENTING VIOLENT EXTREMISM - ROLES AND RESPONSIBILITIES OF THE SINGLE POINT OF CONTACT (SPOC)

The SPOC for Parkwood Academy is Sarah Husband, who is responsible for:

- Ensuring that staff of the school are aware that you are the SPOC in relation to protecting students/pupils from radicalisation and involvement in terrorism;
- Maintaining and applying a good understanding of the relevant guidance in relation to preventing students/pupils from becoming involved in terrorism, and protecting them from radicalisation by those who support terrorism or forms of extremism which lead to terrorism;
- Raising awareness about the role and responsibilities of Parkwood Academy in relation to protecting students/pupils from radicalisation and involvement in terrorism;
- Monitoring the effect in practice of the school's RE curriculum and assembly policy to ensure that they are used to promote community cohesion and tolerance of different faiths and beliefs;
- Raising awareness within the school about the safeguarding processes relating to protecting students/pupils from radicalisation and involvement in terrorism;
- Acting as the first point of contact within the school for case discussions relating to students / pupils who may be at risk of radicalisation or involved in terrorism;
- Collating relevant information from in relation to referrals of vulnerable students / pupils into the Channel* process;
- attending Channel* meetings as necessary and carrying out any actions as agreed;
- Reporting progress on actions to the Channel* Co-ordinator; and
- Sharing any relevant additional information in a timely manner.

* Channel is a multi-agency approach to provide support to individuals who are at risk of being drawn into terrorist related activity. It aims to

- Establish an effective multi-agency referral and intervention process to identify vulnerable individuals;
- Safeguard individuals who might be vulnerable to being radicalised, so that they are not at risk of being drawn into terrorist-related activity; and
- Provide early intervention to protect and divert people away from the risks they face and reduce vulnerability.